

BUMATEC Screw Air Compressor  
**BUILT ON TRUST**

Last Updated MAY 2016

Direct Drive Coupling Type **BFD200**



**BUMA TEC CO., LTD.**  
BUMA Technical Compressor

# Direct Drive Coupling Type BFD200



## Quiet Operation

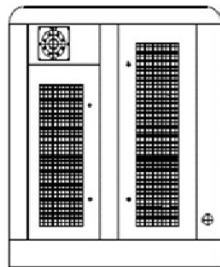
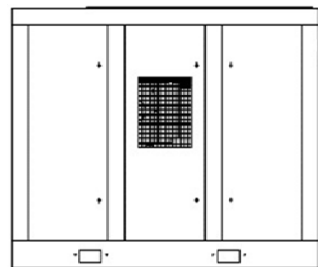
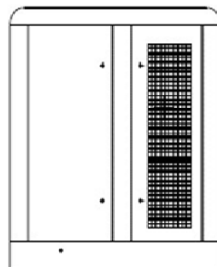
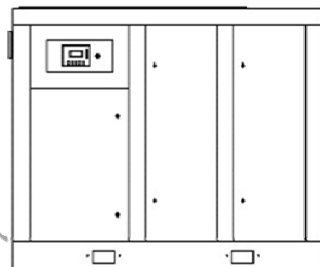
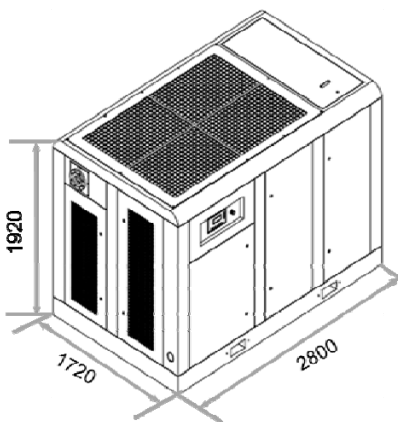
Bumatec airend provide much low noise during its operation through unique design and double wall housing structure. The silencer and centrifugal fan were installed according to simulation design of airflow which is able to reduce air friction noise remarkably. And unique quick ventilation valve was installed which was designed to remove unloading noise. Bumatec compressor guarantee the sound proof under 70dB.

## High Efficiency

Bumatec has developed big size screw rotor of airend through high accuracy machining process and finally achieved the best clearance of the rotor which is able to provide the highest airflow rate in the world. Airflow of Bumatec air compressor is relatively much more than others.

## Maintenance-friendly Design

Bumatec air compressors have maintenance-friendly designs. All the parts are assembled in simple arrangement for easy maintenance such as application of hinge door covers to saves maintenance time, reducing numbers of bolts to oil filter cover and application of o-ring to oil filter to improve life cycles. And it is easy to clean the inside of air compressor when it is dirty.



Unit: mm

BUILT ON TRUST

# Direct Drive Coupling Type BFD200

## Basic Environment

Atmosphere	-----	760mmHg
Max. Ambient Temp.	-----	46°C

## Specification

Free Air Delivery	-----	30.2m <sup>3</sup> /min
Working Pressure	-----	10.0kgf/cm <sup>2</sup>
Cooling Method	-----	Air Cooled by Cooling Fan
Outlet Air Temperature	-----	Ambient Temp. 15°C (Approx.)
Drive Method	-----	Direct Drive Coupling Type (1:1)
Oil Volume	-----	85ℓ
Soundproof	-----	Under 85dBA
Pipe Connection	-----	80A
Outlet	-----	DN 80

## Components

### Electric Motor

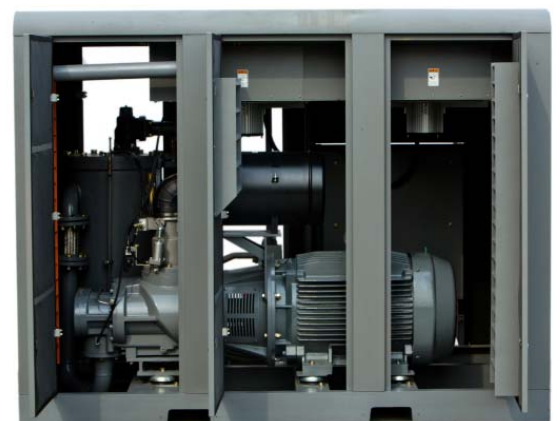


Model	Y2-315L-2
IP Class	IP54
Operation Mode	S1, Continuous Operation Mode
Rated Output	200kW (280HP)
Service Vector	1.2
Electricity Pole / RPM	AC380V / 50Hz / 3Ph 2Pole / 2975rpm
Start Method	Y-Delta
Lubrication	CHERROM
Cooling Method	Fan Cooled (Built-in)

### Airend



Model	V47060001
Compression	Oil Flooded 1-stage Compression
Rotor Combination	5 x 6 (Male x Female)
Pressure Range	5 ~ 13bar
Operation Speed	3120rpm



\*\*All technical data are purely indicative and subject to change for improvement without notice.

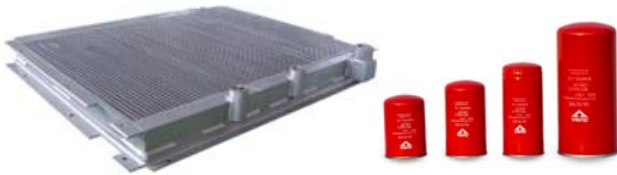
# Direct Drive Coupling Type BFD200

## Pneumatic & Electric Valves



Intake Valve	HX DN120
Air Filter	2 $\mu$ m/min. 99.8% (3ppm)
Thermostatic Valve	SA DN40
Minimum Pressure Valve	HX DN65
Safety Valve	A28X-16T (DN40)
Purge Valve	HX
Solenoid Valve	
- For Control of Intake Valve and Purge Valve	

## Lubricant Oil Circulation



Lubricant Oil Cooler	1 set
- Aluminum Fin Radiator Type	
Air Cooler	1 set
- Aluminum Fin Radiator Type	
Oil Filter & Housing	1set
Cooling Fan (Motor AC380V)	2set
- Low Noise Centrifugal Type	

## PLC Display Controller



Full Auto    Comprehensive Safety Production    Abnormal Prompted Alarm    Display All Important Operation

Type	Micro Controller (LCD)
Electricity	AC380V, 3Ph (Transformer Built-in)
Control Method	Loading & Unloading

- ✓ Auto Running / Stop Control
- ✓ Temperature / Pressure Display Control
- ✓ Timer Running / Stop Control
- ✓ Master / Slave Interlock Control

## Functions

### Error Detecting Function

- ▼ System Trip & Warning Function
- ✓ High Discharge Air Temperature
- ✓ Main Motor Overload
- ✓ Fan Motor Overload
- ✓ Pressure & Temp. Sensor Failure

### Auto-Control Function

- ✓ Stop Delay Function
- ✓ Re-start Pressure
- ✓ Automatic Start

### Maintenance Function

- ✓ Air Filter Changing Warning
- ✓ Oil Filter Changing Warning
- ✓ Air Oil Separator Changing Warning

### Operation Status Display

- ✓ Outlet Air Pressure
- ✓ Outlet Air Temperature
- ✓ Operation Mode
- ✓ Load / Unload Status

### Tracking Record Function

- ✓ Amot Clock (Automatic Time)
- ✓ Total Operation Time
- ✓ Load / Unload Time
- ✓ Set Stop Delay Time

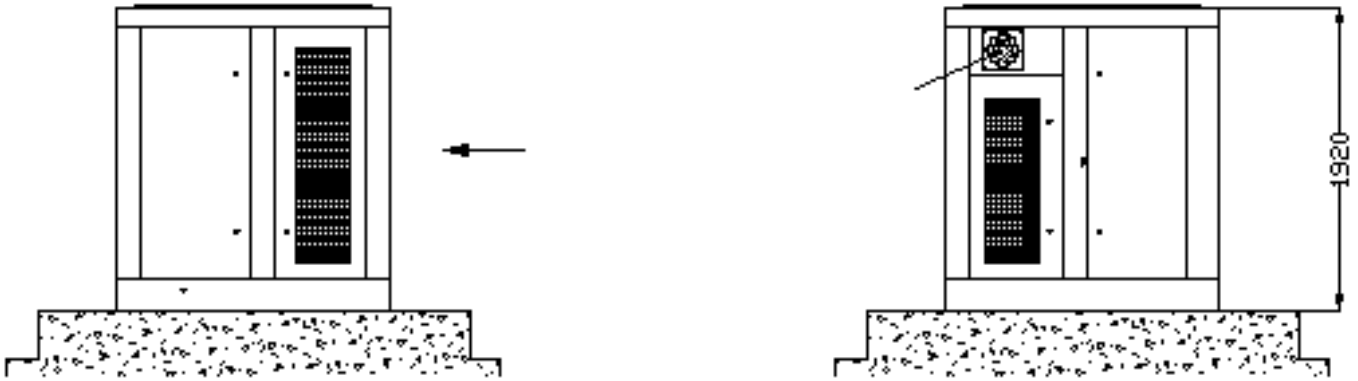


\*\*All technical data are purely indicative and subject to change for improvement without notice.

# Direct Drive Coupling Type BFD200

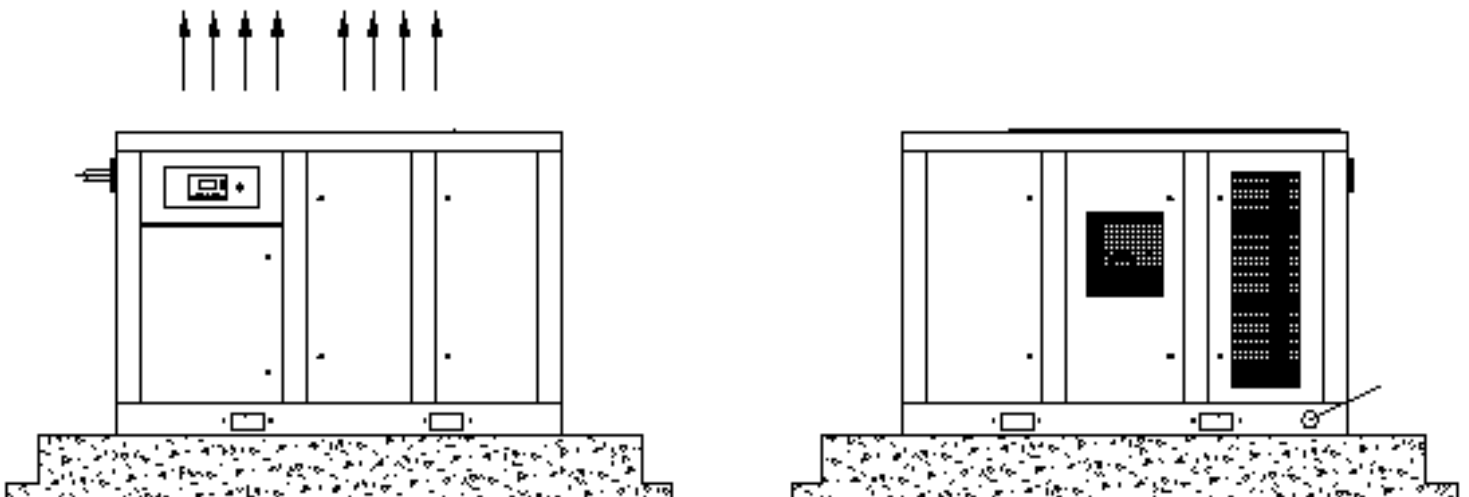
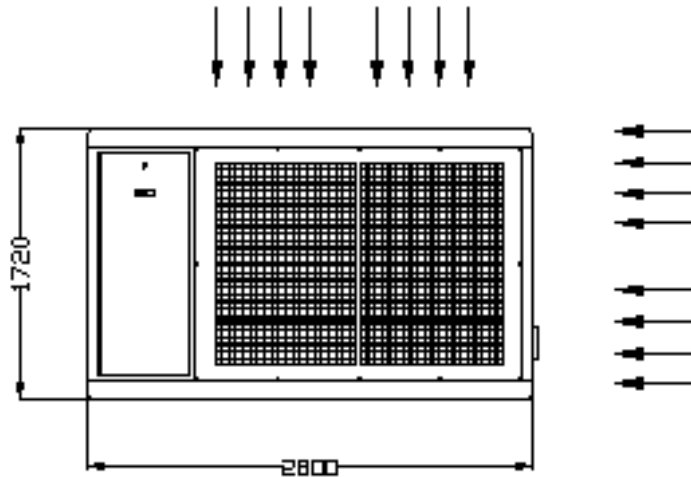
## Appearance Drawing

Unit: mm



### Dimension

- Length : 2,800 mm
- Width : 1,720 mm
- Height : 1,920 mm
- Weight : 4,000 Kg



\*\*All technical data are purely indicative and subject to change for improvement without notice.

# BUILT ON TRUST

[www.bumatec.com](http://www.bumatec.com)



**BUMA Group Overseas Marketing Headquarter**

291 1637 Beon-gil, Seobu-Ro, Juchon-Myeon,  
Gimhae-City, Gyeongsangnam-Do, Korea  
(ZIP 621-843)

TEL : +82-55-337-9891~3 FAX : +82-55-337-9894